

Dune



Thank you for purchasing **num** Cuboids Tile.

Assembly Instructions

Please take the time to read this installation guide before you install Num Lighting modular light tiles models:

The Num lighting modular light tile must be installed by a professional electrician in accordance with applicable and appropriate electrical codes.

This guide does not supersede any local and international regulations for electrical installations.

This product is designed for indoor use and dry locations only.

It is recommended not to place tile in an area of direct sun light. The material used in this product may show a natural chromatic variation.

The system is designed to be mounted on to a wall only. Do not attempt to place the Tile system on the ceiling.

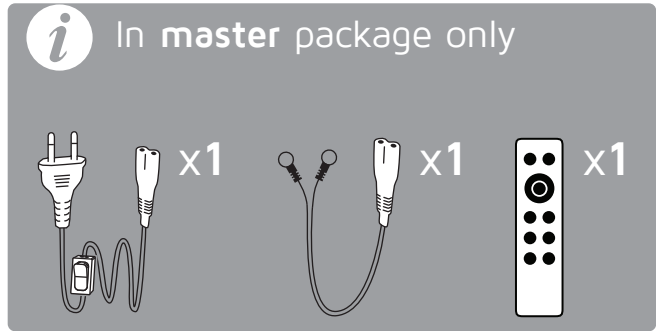
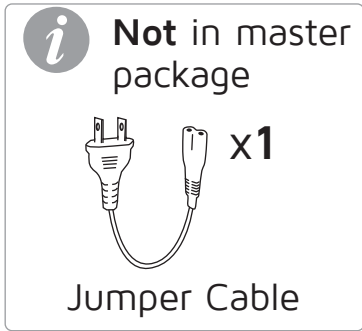
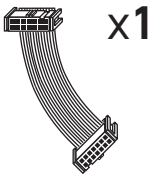
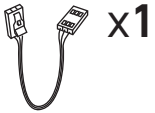
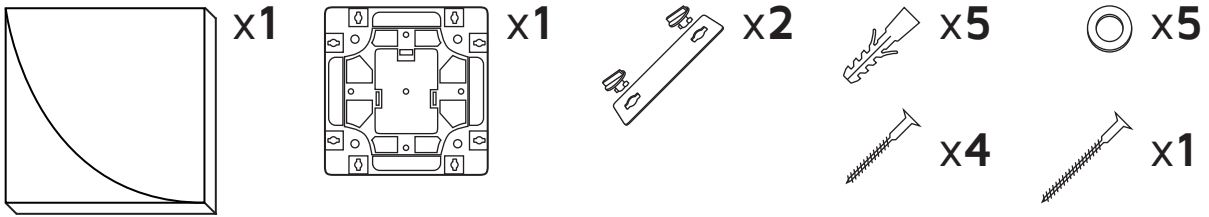
The **num**lighting Tile wall system is patent and design pending.

Warranty – one year limited warranty – **num**lighting will replace merchandise only if the nature of defect was a manufacturing defect.

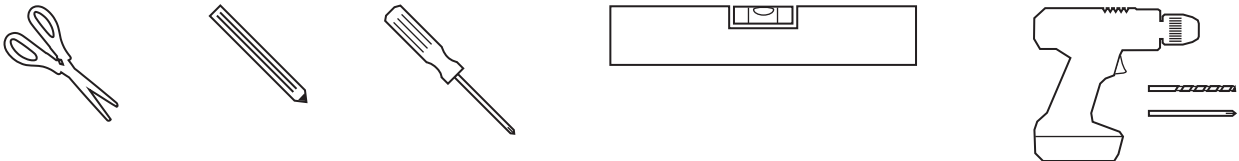


Before installation, maintenance or cleaning, first disconnect the input power to the system or switch off power.

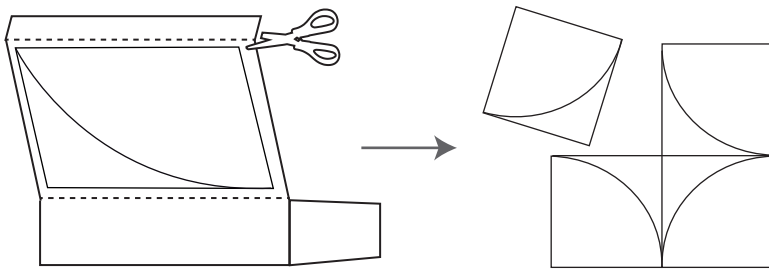
Confirm all components received



Tools needed

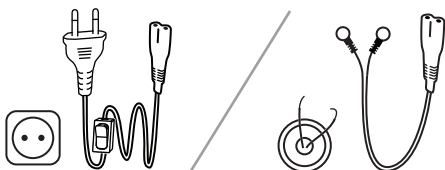


a) Plan your composition

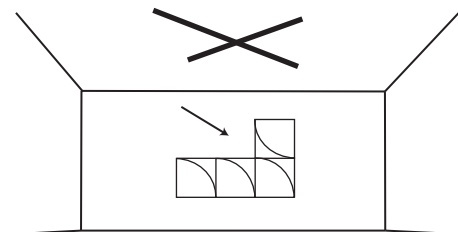


! One fixture configuration could contain up to 16 tiles only.

i Ensure to have an electric feeding in the chosen location.



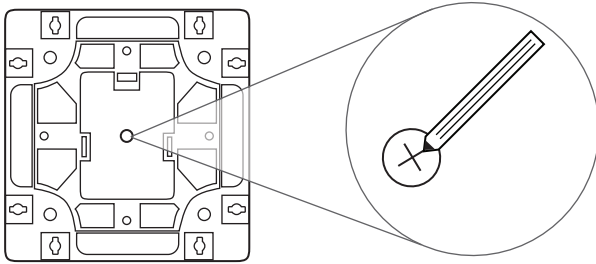
! Do NOT attach tiles onto a ceiling.



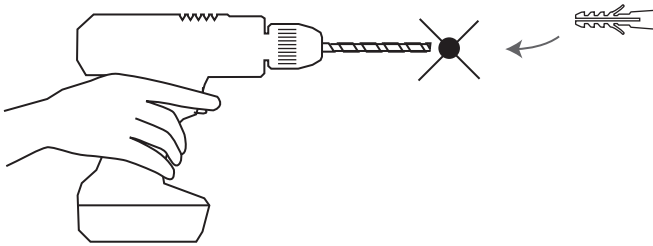
b) Attach first base

i Start with the base which will be connected to the electric feeding.

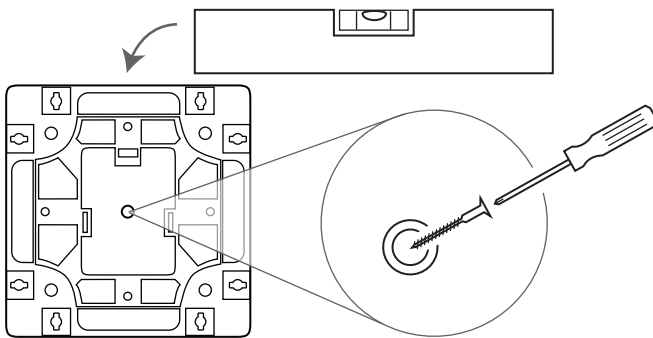
b.1. Attach the base against the wall and mark the central point.



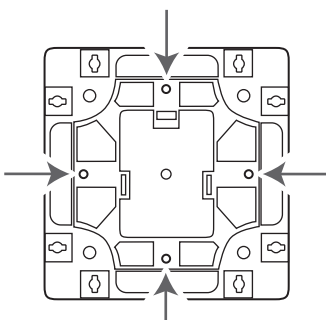
b.2. Set aside the base, drill the marked point, and then insert the anchor.



b.3. Reattach and screw the base while checking alignment.



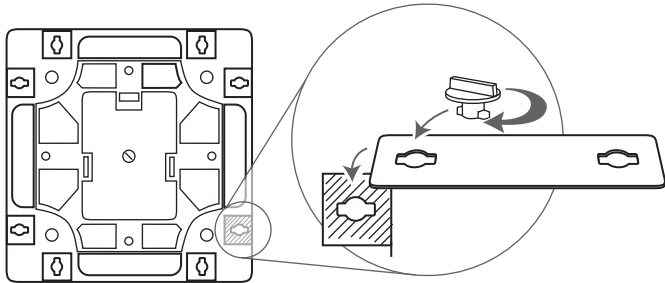
i There are 4 other optional drilling holes.



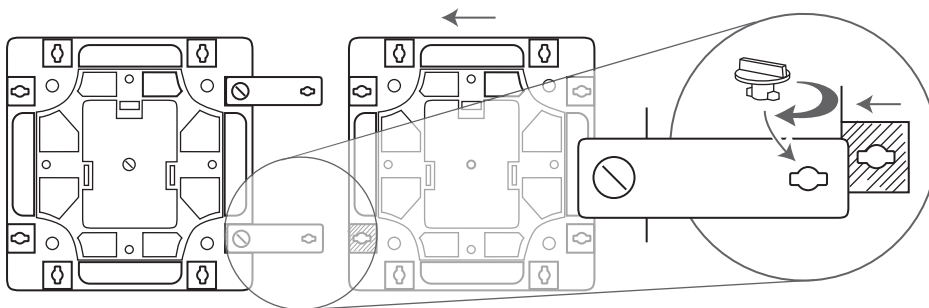
! In case of setting one tile only, Switch OFF electric power, and then proceed to section d.3.

C Attach next base

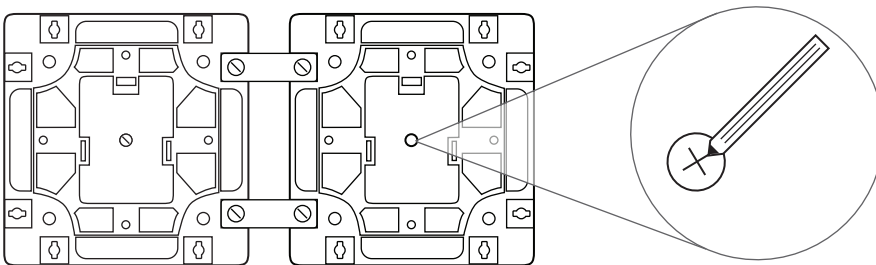
c.1. Attach the spacers onto the side of the first base, where you wish to mount the next base.



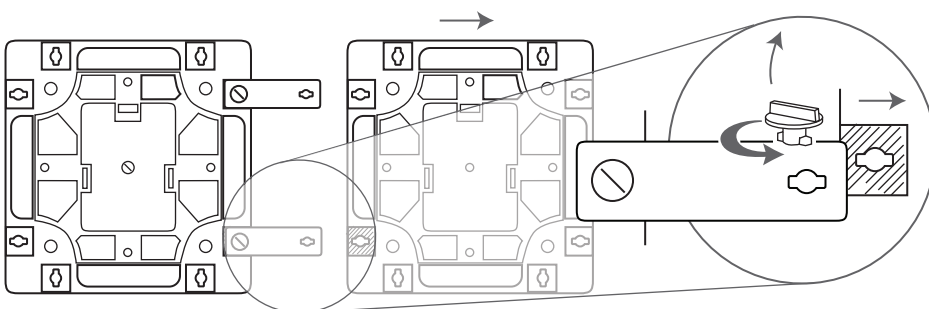
c.2. Attach the current base to the spacers.



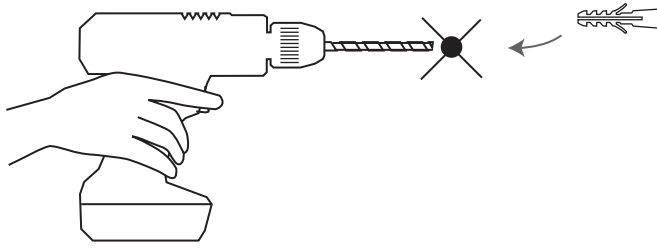
c.3. Mark the central point for drilling.



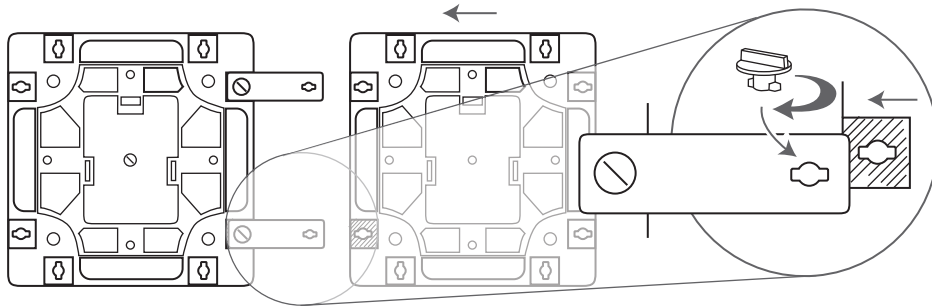
c.4. Detach the current tile from the spacers and set aside.



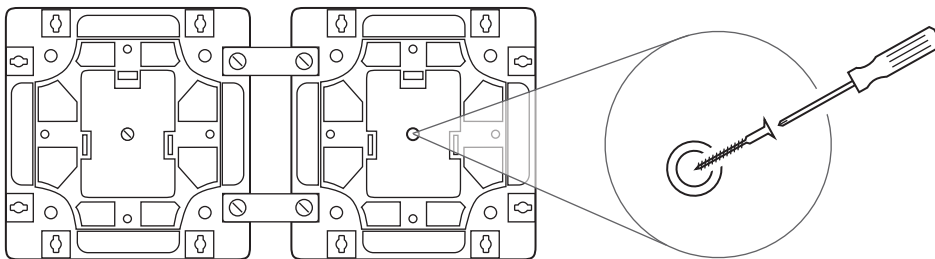
c.5. Drill the marked point, and then insert the anchor.



c.6. Reattach the base.



c.7. Screw the base; Recommended to check alignment once more.

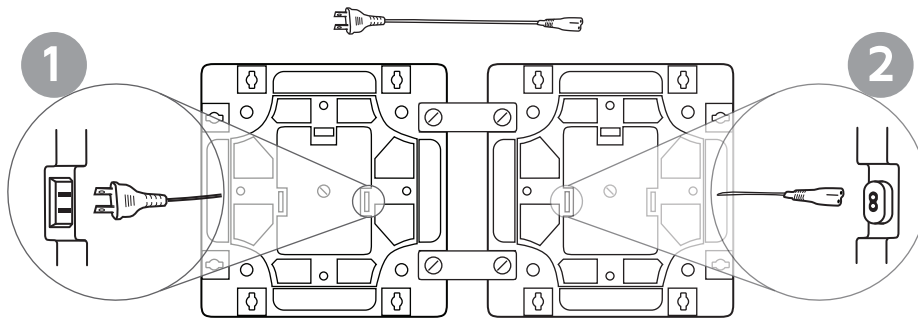


i Repeat instructions from section **C.1.** with all other bases.

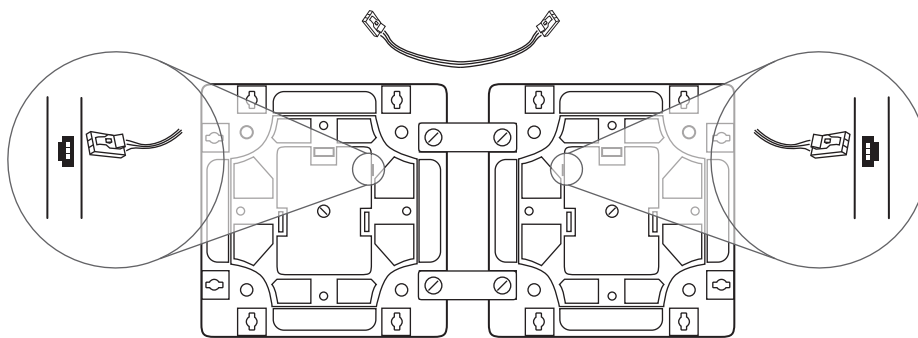
d) Connect cables

! Switch OFF electric power

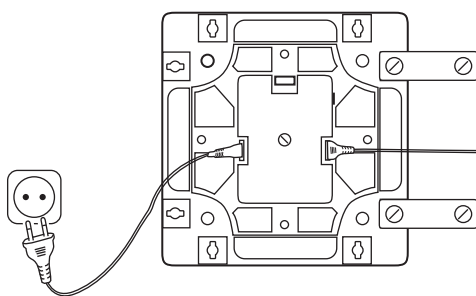
d.1. Connect electrical jumper cable.



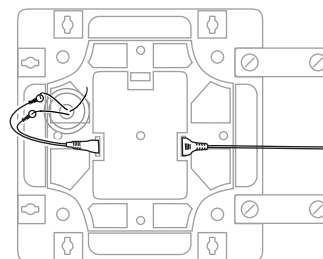
d.2. Connect the wire-board connector.



d.3. Connect to the electric feeding.



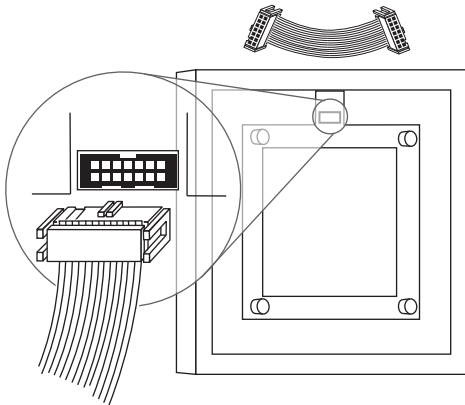
! Direct electrical connection must be assembled by Professional electrician.



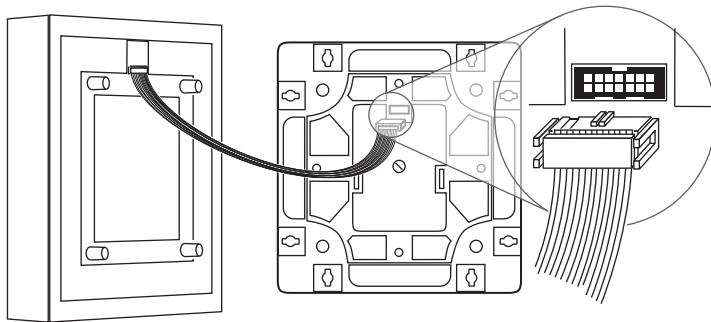
! Switch ON electric power only after all jumper cables and electric feeding cables are connected.

e) Attache the Tile

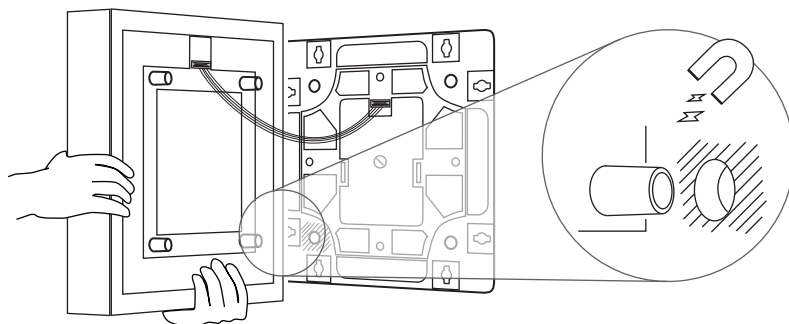
e.1. Connect the controller cable to the back of the tile.



e.2. Connect the controller cable to the base. Tile should lit on.



e.3. Attach the tile to the base.



Troubleshooting

Light does not turn on?

1. Disconnect the electrical power.
2. Check again all cable and connector connections.
3. Resume electrical power and turn light on.

Technical Support

Phone: 972-3-7440388

Fax 972-3-7440389

Email: info@numlighting.com

Web site: www.numlighting.com